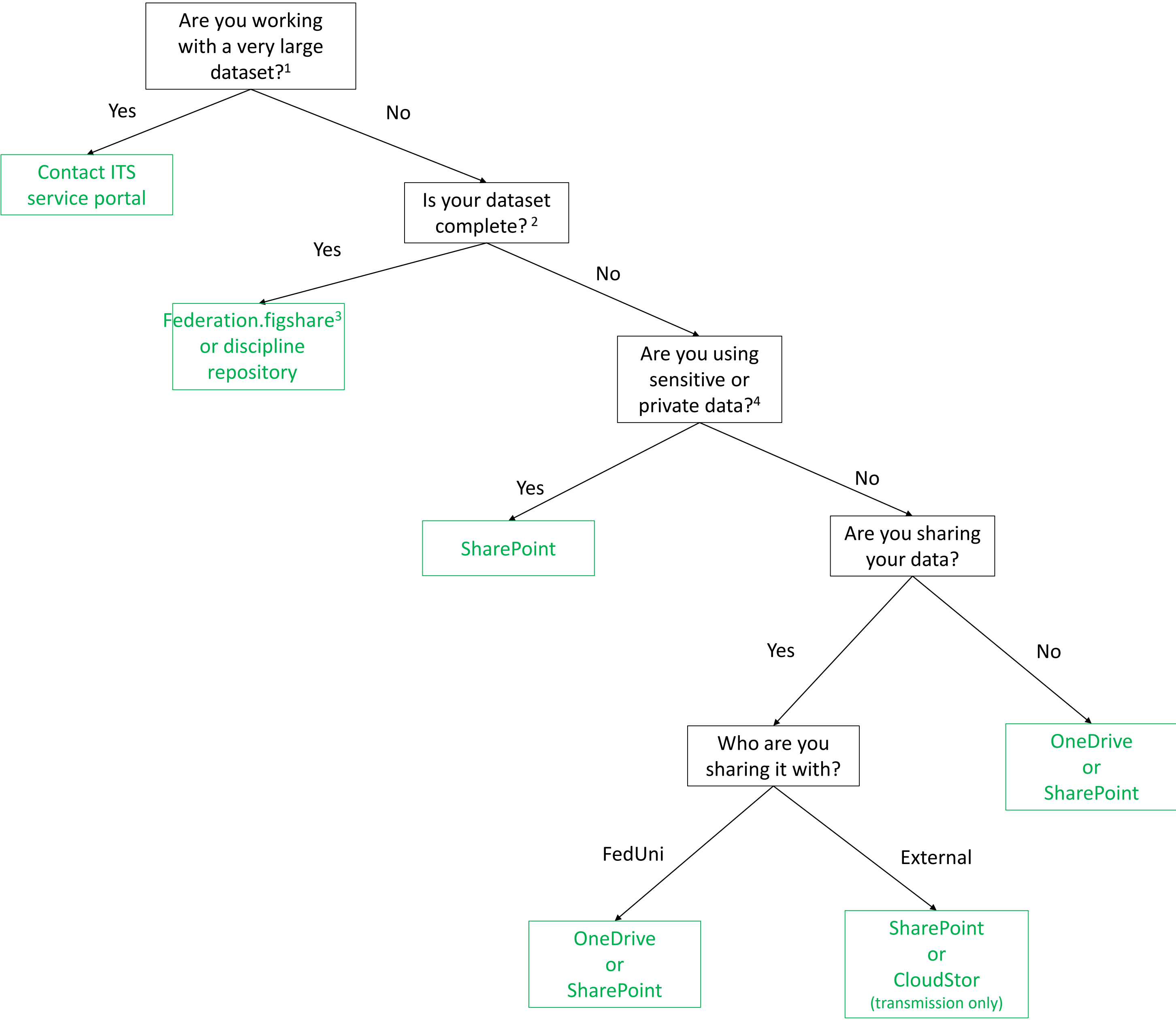


# Federation University Digital Research Data Storage Options Flowchart



1. Dataset size (guide only): ‘small’, up to 30Gb; ‘medium’ between 30Gb and 100Gb; ‘large’, greater than 100 and up to 500Gb; and, ‘very large’, greater than 500Gb.

2. For the purposes of this document, active or working data are defined as data that require ongoing access for modification, analysis, compilation, etc. Archival storage is appropriate for ‘end state’ data.

3. Datasets loaded to Federation.figshare may be embargoed, restricted or kept private.

4. Sensitive data includes personal, licenced, proprietary and/or commercially-produced data. For “sensitive” data classifications, refer to the following legislative definitions: Information Privacy Act 2000 (Vic), Privacy Act 1988.